

RAFFETY

FINE ANTIQUE CLOCKS



This brochure illustrates a representative selection from our current stock of fine English and European clocks dating from the 17th to the 19th centuries. Each clock has been carefully chosen for its originality, overall quality and decorative appeal - important criteria when considering the purchase of an antique timepiece.

Raffety has been based in Kensington Church Street, London, for many years and we are proud of the excellent reputation that we have established with our private clients, collectors and museum authorities worldwide.

All our clocks are sympathetically restored to the highest standard by specialist experienced craftsmen and we offer a full guarantee as to their authenticity and good working order.

We deliver and install our clocks free of charge anywhere in the United Kingdom. For our overseas clients, we are able to offer a fully insured door to door shipping service, expertly packed by our regular carrier, and provide you with comprehensive setting up instructions.

Should any of the clocks illustrated be of interest to you, do feel free to call or see us at our shop. Alternatively, please complete one of our "wants" cards, detailing your specific requirements.

We look forward to hearing from you.

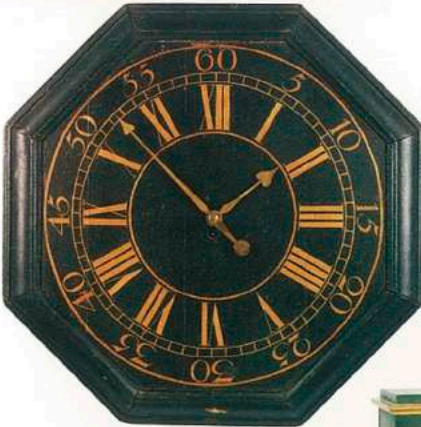
Nigel Raffety



P.O. BOX 120
CREDITON, DEVON EX17 9BG
TELEPHONE: 020 7937 2220
info@raffetyclocks.com
www.raffetyclocks.com

Photography by Jeff Wilkinson. Tel: 0171 494 2828

◀ *Rare Georgian period octagonal mural timepiece with gilt numerals on a black ground. Diameter: 30½ in. (77.5 cm.).*



▶ *French Empire ormolu and patinated bronze striking mantel clock. c.1810. Height: 14 in. (35.5 cm.).*



◀ **JAMES BIDLAKE LONDON**

George III period mahogany striking verge bracket clock with signed silvered and engraved dial. c.1795. Height: 20½ in. (52 cm.).

▼ *Regency period quality ormolu and patinated bronze fusee mantel timepiece. c.1830. Height: 11 in. (28 cm.).*



Front Cover: JOHN WATTS STAMFORD

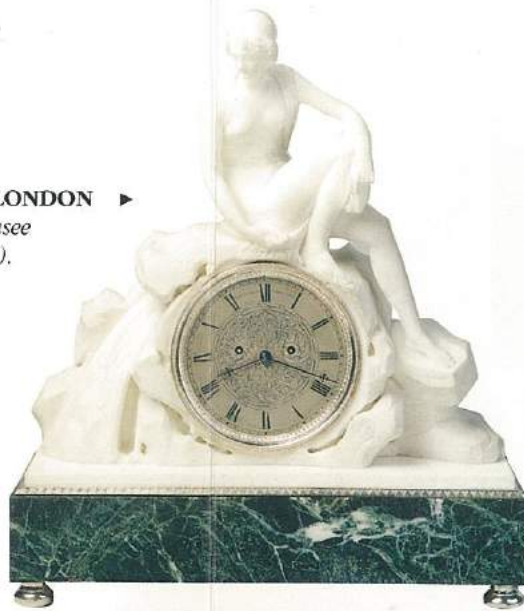
Magnificent William & Mary period walnut and floral marquetry musical longcase clock. c.1695. Height: 89 in. (226 cm.).

HUNTLEY AND EDWARDS CORNHILL LONDON ▶

Fine quality white and green marble striking fusee mantel clock. c.1840. Height: 15¾ in. (40 cm.).

JAS. HARRISON LONDON ▼

George III period mabogany bell-top verge bracket clock. c.1770. Height: 20½ in. (52 cm.).



◀ JUDAH JACOBS LONDON

George III period mabogany bell-top striking bracket clock. c.1770. Height: 20½ in. (52 cm.).

CHAS. WOODWARD DUBLIN ▶

An elegant London quality mabogany longcase clock with revolving moon and tidal indication in the dial arch. c.1790. Height: 94½ in. (240 cm.).



PHILLIP PARKER LONDON ▶

Rare George III period musical mabogany longcase clock with painted automaton scene in the dial arch. c.1765. Height: 91½ in. (233 cm.).

▶ JOHN DWERRIHOUSE BERKLEY SQUARE LONDON

George III period mabogany and ormolu-mounted striking bracket clock. c.1790. Height: 21½ in. (54.5 cm.).





HOROLOGIA FERREA.
*Rota aqua ferrea aetherisq; volatur, Reclinet aequè et hæc et illa tempora
 nulla fluenda volucras parat per la regem dæmon, ab omni modo abscidit hæc et aqua...*

GEORGE GRAHAM ▶
LONDON No.776

*An exceptional
 figured walnut
 longcase clock by this
 celebrated clockmaker,
 ex Wetherfield collection.
 c.1740.
 Height: 89 in. (226 cm.).*



◀ **SAMUEL
 ALDWORTH
 STRAND
 LONDON**
*A rare walnut
 and marquetry
 dome-topped
 bracket clock.
 c.1695.
 Height: 13 in.
 (33 cm.).*



◀ **BROUNKER WATTS**
LONDON
*An ebony and gilt
 repoussé basket-top
 bracket clock
 striking and pull
 quarter-repeating
 on 5 bells.
 c.1700.
 Height: 18 in. (45.5cm.).*

DANIEL QUARE ▶
LONDON

*Fine ebony and
 gilt-mounted striking
 bracket clock,
 with date indication
 in the dial arch,
 typical of this
 famous maker.
 c.1715.
 Height: 17¾ in. (45 cm.).*





◀ **HENRY GODFREY
LONDON**
*Fine floral marquetry and
burr elm longcase clock.
c.1695.
Height: 81 in. (206 cm.).*

**JOHN PETERKIN ▶
LONDON**
*Fine quality Regency period
chamfer-top mahogany
striking bracket clock, with
wall bracket. c.1820.
Height: 16 in. (40.5 cm.).*



◀ **ROBERT
ROSKELL & SON
LIVERPOOL**
*Superb quality
rosewood and
brass inlaid
quarter-chiming
table clock.
c.1840.
Height: 25 in.
(63.5 cm.).*



**JONATHAN MARSH ▶
LONDON**
*An early Georgian period
walnut musical longcase
clock, playing one of six
tunes on the hour. c.1725.
Height: 95 in. (241 cm.).*

**THOS. PERCIVAL ▼
NEW BOND STREET
LONDON**
*George III period mahogany
arched top striking bracket
clock. c.1790.
Height: 16 in. (40.5 cm.).*

