

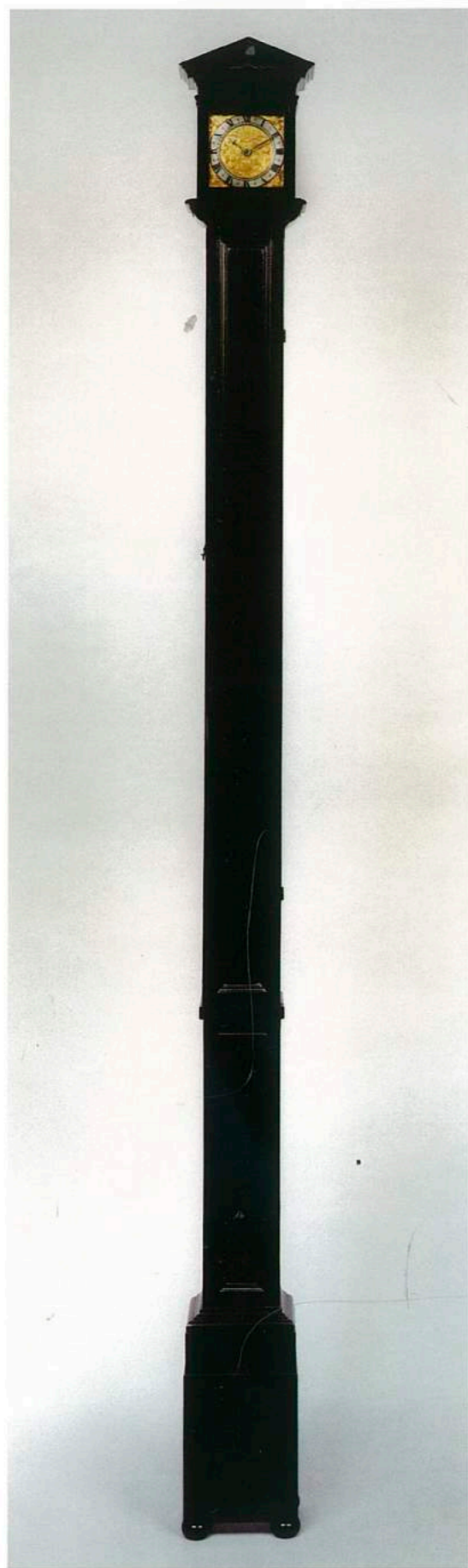
RAFFETY

FINE ANTIQUE CLOCKS



LANTERNS & TAVERNS

CLOCKS FOR THE WALL AND HALL 1620 - 1850



Anthony Blackford, Warwick

A possibly unique miniature ebony architectural timepiece, the short duration weight-driven movement with crown wheel verge escapement and short bob pendulum. This remarkable miniature architectural clock only came to light in late 2007 after having been in the same family for many generations.

Circa 1670.

Height : 68³/₄ in. (174 cm.)



RAFFETY

FINE ANTIQUE CLOCKS

LANTERNS AND TAVERNS : CLOCKS FOR THE WALL AND HALL

Welcome to our 2008 BADA 90th Anniversary Exhibition. We believe that our collection of Lantern, Tavern and English Dial Clocks, which cover the period from the early 17th to the mid 19th century, is one of the finest ever to be offered for sale. Given the variety, horological rarity and aesthetic appeal of these clocks, there will be pieces to interest both the serious collector and a newcomer to the field. We have also included a select group of fine 19th century Vienna regulators. These clocks vary greatly in the complexity and duration of their movements but the classic simplicity of their dials and cases makes them the ideal clock for the minimalist interior of today.

Nigel Raffety



3 1/2 inch engraved brass dial of miniature timepiece by Anthony Blackford, Warwick.

Front cover:

A very early gilt and chinoiserie shield dial Tavern clock made by David Compigne, Winchester. Circa 1730. Height : 65 in. (165 cm.)

Early 17th century chamber clock

Right : A very finely preserved South German, painted iron Chamber clock of circa 1620, quarter striking and with alarm. Converted from balance wheel to verge around 1700.

Height : 13 in. (33cm.)



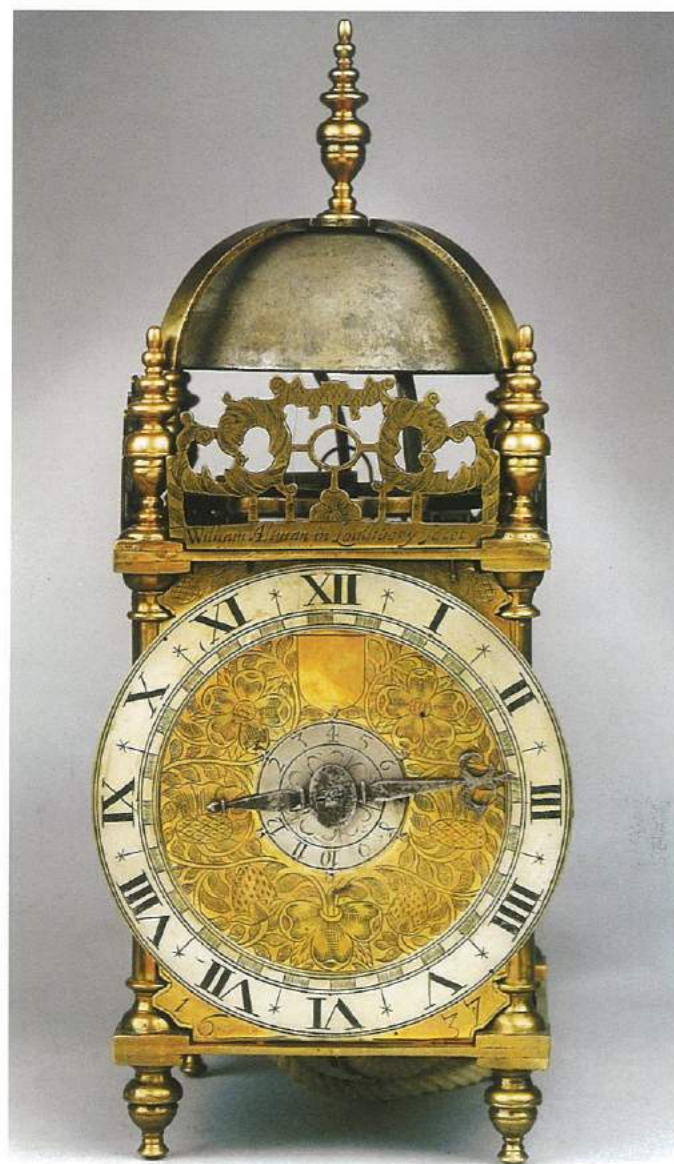
**William Allman
In Louthbery Fecet 1637**

Left : A rare Charles I period lantern clock dated 1637, the finely engraved dial with central alarm disc and narrow chapter ring with inner hatched half hour divisions.

The pierced fret below the main hour bell is fully signed and the movement with reinstated balance wheel escapement strikes the hours on the bell.

Dated 1637.

Height : 15 in. (38 cm.)



THE LANTERN CLOCK

These domestic timekeepers first appeared on the Continent in the 16th century and were first made in England in the 1620s where they continued to be made in one form or another until the end of the 18th century. A lantern is a wall clock with square bottom and top plates surmounted by a large bell. It has four turned corner pillars and a thirty hour movement with one weight, or more if fitted with an alarm or quarter striking train. The origin of this clock's name remains a mystery, although it does resemble a lantern in its shape. Brass, the main metal of which lantern clocks are made, is an alloy of copper and such alloys were often called latten, hence 'Lantern' could be a corruption of this old word. The weights which drive the clock movement hang freely below the clock case.

The English lantern clocks on show range from the rare pre Civil War first period London clock by William Allman dated 1637, to a number of good second and third period lantern clocks by well-known London makers. There are also rare miniature alarm timepieces, along with some exceptionally well preserved provincial lantern clocks from both the 17th and 18th centuries. The lantern clock by Richard Savage of Wenlock Magna is both dated 1694 and ascribed to its original owners, Henry and Ursula Acton, probably as their marriage clock.

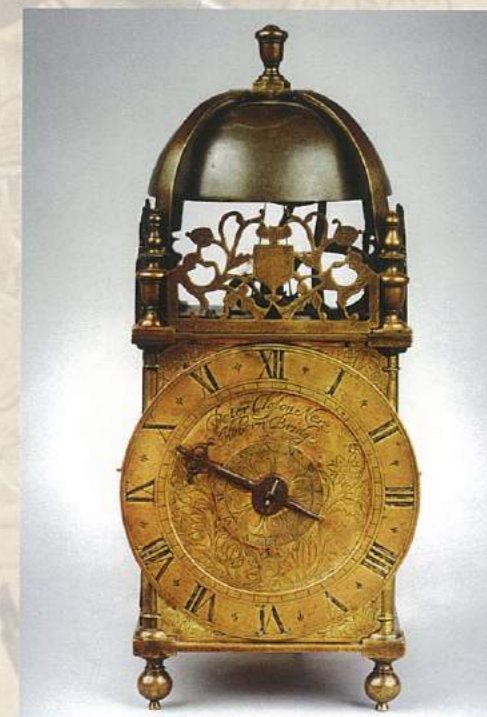
The numbered miniature timepiece alarm by Richard Deykin of Worcester, circa 1760 retains its original slim caddy top oak case and the unusual lantern clock of similar date by John Belling of 'Bodmyn' in Cornwall shows some very interesting continental influences in the design of both its case and movement.

**Peter Closon
Nere Hoborn Bridge**

A classic second period London lantern clock by this famous maker, the hour striking movement with alarm.

Circa 1650-1660.

Height : 14 in. (35.5 cm.)





Sam Aldworth, Oxon

Left : A good late 17th century hour striking lantern clock with alarm by this well-known apprentice of John Knibb.

Circa 1695.

Height : 15 1/2 in. (39 cm.)



*Tho. Wheeler near
ye French Church*

Right : A fine James II period striking winged lantern clock, the case with florally engraved dial centre and alarm disc, the pierced front fret signed by this well-known maker of lantern clocks.

Circa 1680.

Height : 15 1/2 in. (39.5 cm.)

Lawrence Debnam in Froome

Right : A rare example of a late 17th century West Country Lantern clock with a number of unusual features typical of the area. This clock is described in full on page 517 of George White's book "English Lantern Clocks".

Circa 1690.

Height : 15 in. (38 cm.)



Richard Savage de Wenlock Magna Fecit

Left : Made for Henry and Ursula Acton in 1694 as a marriage clock. This is the most untouched dated and ascribed provincial lantern clock which we have owned. The movement, which retains traces of its original gilding, has a number of features which may be unique to this maker.

Dated 1694.

Height : 16 in. (41 cm.)



**Daniel Parker
in Fleet Street**

Right : A fine third period
miniature London lantern
clock with its original verge
escapement and alarm work.

Circa 1680.

Height including finial :
9 1/2 in. (24 cm.)

**Henry Deykin,
Worcester No. 891**

Left : An exceptionally rare
miniature lantern timepiece
alarm clock in its original
slender caddy topped oak case
of grandmother proportions.

Circa 1760.

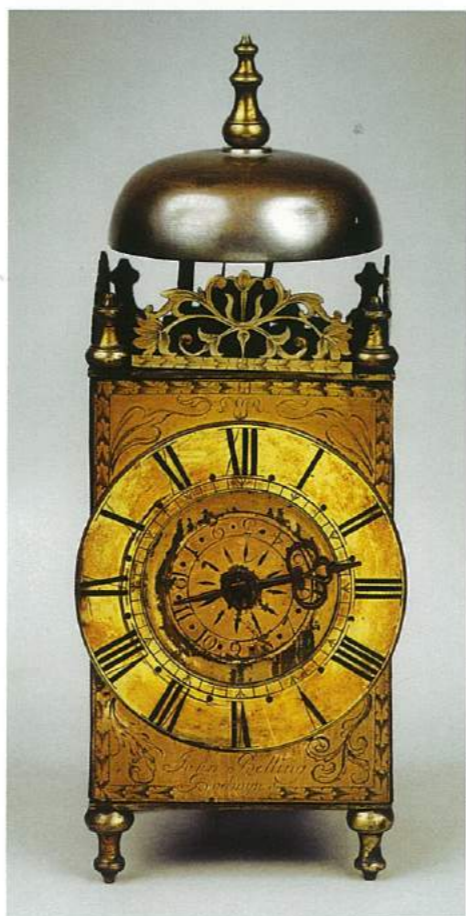
Height : 75 in. (190.5 cm.)
Dial width : 5 1/2 in. (14 cm.)

John Belling, Bodmyn

Right : A rare and very original
timepiece alarm lantern clock
in a style unique to this maker
and showing marked
continental influences.

Circa 1760.

Height : 10 in. (25.5 cm.)



**Andrew Savery in
St Martins Londini**

Left : A good third period London
'winged' striking lantern clock with
alarm by this excellent maker.

Circa 1685.

Height : 15 in. (38 cm.)

**Edward Cutbush,
Maidstone**

Right : A good example of a Kentish
Lantern clock in a fine state of preservation.
The identical clock is pictured on Page 55
of "Kent: Clocks and Clockmakers"

by Michael Pearson.

Circa 1705.

Height : 15 1/2 in. (39.5 cm.)

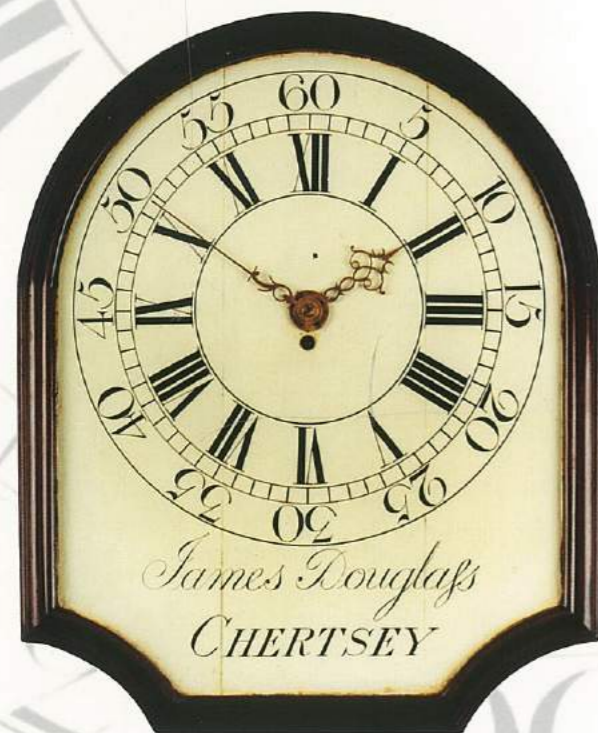


THE TAVERN OR 'ACT OF PARLIAMENT' CLOCK

We think these are amongst the most exciting and individual of English wall clocks and of huge historic and decorative appeal. For years they were mistakenly called 'Act of Parliament' clocks on the grounds that in 1797 Pitt the Younger introduced a tax by Act of Parliament whereby: "For and upon every clock or timekeeper by whatever name the same shall be called.....shall be charged an annual duty of Five Shillings."

It was suggested that these large clocks were put in taverns and other public places for the benefit of those no longer able to afford a watch or clock of their own. The Act was repealed a year later in 1798 after intense lobbying from the clockmakers who had seen their sales plummet.

Tavern clocks were in fact made from about 1720 until the early years of the 19th century. With their early, clearly legible dials and bold hands they were ideal timekeepers for inns and coaching houses that prided themselves on keeping strict schedules for the coaches which brought them so much trade. The weight driven movement kept excellent time and being placed high on the wall they were safe from the more boisterous or inebriated clients. It is still occasionally possible to see these clocks in old coaching inns, well-known examples being the Tavern clock in the George Inn in Southwark and the one at the Angel Inn in Guildford. The only previous selling exhibition of Tavern clocks to match the range and rarity of those shown here was the ground-breaking show mounted by Milo at Strike One in 1977. We are extremely grateful to him for his expertise and time in supporting this exhibition.



James Douglass, Chertsey

A very rare spring driven Tavern timepiece with arched top and a white wooden shield dial with moulded mahogany surround, the 8-Day movement with A-shaped plates.

Circa 1780.

Height : 25 in. (63.5 cm.)



John Taylor, London

Left : A classic London white round dial tavern clock in a very original state and of rare small size. The movement has A-shaped plates and is of 8-Day duration.

Circa 1780.

Height : 43 1/2 in. (110.5 cm.)

Jason Cox, Long Acre, London

Right : An exceptional Tavern clock with beautiful gilt chinoiserie decoration incorporating a carousing Bacchic figure and fruiting vines. The early case has a moulded dial surround and the bulbous shaped base and detachable panel with lenticle are most unusual features.

Circa 1740.

Height : 64 1/2 in. (164 cm.)

Provenance : The Onions Collection.





William Biggin, Sudbury

Left : A charming and finely preserved Tavern clock with black and gilt chinoiserie decoration and an original coloured print of a pair of lovers with their pet dog set against a wooded background. The A-shaped plated timepiece movement is of 8-Day duration.

Circa 1780.

Height : 58 in. (147 cm.)

Overall dial width : 28 1/2 in. (72.5 cm.)



John Draper, Maldon

Right : An impressive George III period shield dial black and chinoiserie lacquer Tavern timepiece, of rare large size and fine proportions.

Circa 1765.

Height : 67 in. (171 cm.)

Overall dial width : 35 in. (89 cm.)



Birch, Tenterden

Left : A good late George III period white round dial Tavern timepiece, the black and gilt chinoiserie case showing oriental figures before a pavilion with a pair of doves above.

Circa 1790 - 1795.

Height : 57 in. (145 cm.)

Overall dial width : 28 in. (71 cm.)



Right : A rare mid 18th century black and gilt lacquer teardrop Tavern clock. The long shaped plated timepiece movement is of 8-Day duration.

Circa 1750.

Height : 54 in. (137 cm.)

Overall dial width : 28 in. (71 cm.)



John Johnson, London

Left : A good George II period shield dial Tavern timepiece, the A-shaped plated movement of 8-Day duration and the case with fine black and gilt chinoiserie decoration.

Circa 1760.

Height : 62 in. (157.5 cm.)

Dial width : 32 in. (81 cm.)

**Dwerrihouse Carter,
Ogston & Bell,
Davies Street**

Right : A fine early 19th century mahogany Tavern timepiece by this well-known partnership, the case with finely figured mahogany veneers and the weight driven movement of 8-Day duration.

Circa 1835.

Height : 50 in. (127 cm.)

Dial width :
21 in. (53.5 cm.)



William Hayter, Chatham

Left : A superb 18th century white dial Tavern clock. The rare 'teardrop' shaped case has gilt chinoiserie decoration and exotic coloured birds set within an oriental landscape against a black background.

Circa 1770.

Height : 60 in. (152 cm.)



THE ENGLISH DIAL

At one time, an English Dial clock was to be found in the library and servants' quarters of every great house, in city offices, gentlemen's clubs, every shop of any standing, railway stations and schools. With a spring driven movement of 8-Days duration their dials vary from finely engraved, silvered brass to the more functional white with black lettering. Interestingly, their production during the early years from around 1780 to the 1830s seems to have been mostly confined to London, the Home Counties and East Anglia. It was only in the second half of the 19th century that clocks with a white iron dial were to be found throughout the country, frequently bearing the name of the retailer rather than the actual maker. The clocks illustrated in this catalogue all predate the more mass produced examples from the Victorian period.



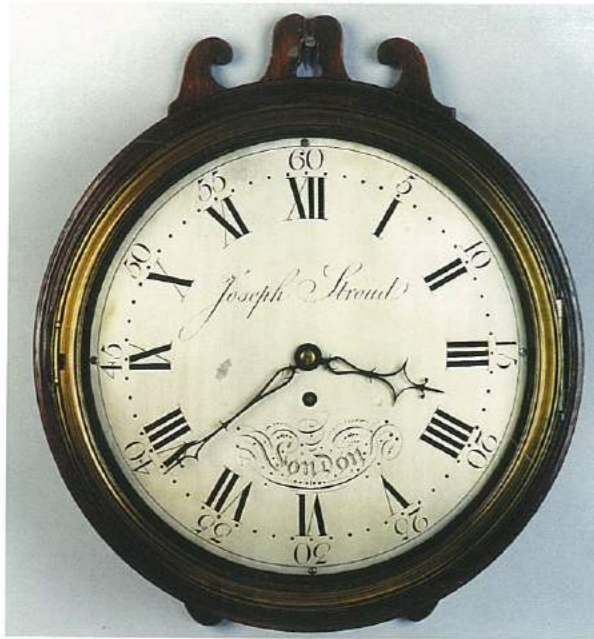
Le Grave, London

A fine late Georgian silvered dial double saltbox wall clock. The 8-Day A-shaped timepiece movement has a verge escapement and the silvered dial is decorated with exceptional flower and foliate engraving.

Circa 1780.

Dial width : 11 3/4 in. (30 cm.)

Overall diameter : 14 3/4 in. (37.5 cm.)



**Joseph Stroud,
London**

Left : An exceptional double saltbox
silvered dial timepiece, the 8-Day movement
with knife-edge verge escapement.
Circa 1785.
Dial width : 12 in. (30.5 cm.)
Overall diameter : 15 in. (38 cm.)

John Ellicott, London

Right : A rare George III period mahogany hooded wall
clock by this eminent Royal Maker, the 8-Day hour striking
movement with strike/silent and 10-inch silvered dial.
Overall Height : 26 1/2 in. (67.5 cm.)
Dial width : 10 in. (25.5 cm.)



James Thomas, Chester

Left : An unusual George III silvered dial mural
timepiece of rare small size with engraved silvered
dial and a wooden bezel.
Circa 1780. Dial width : 10 in. (25.5 cm.)
Overall diameter : 14 3/4 in. (37.5 cm.)



Britton, Devizes

Right : An exceptional painted wooden dial
saltbox wall clock of rare large size, the 8-Day
verge movement with A-shaped plates. The dial
retains its original white painted surface.
Circa 1820.
Dial width : 17 1/2 in. (44.5 cm.)
Overall width : 21 1/2 in. (54.5 cm.)



William Glover, London

Left : A good George III period carved giltwood cartell
timepiece, the case with a well carved Ho Ho bird and
flowers and foliage. The 8-inch silvered brass
dial has a verge escapement and runs for 8 days.
Circa 1760.
Height : 31 in. (79 cm.)

Edward Pistor, London

Right : A superb George III mahogany verge wall timepiece,
the case with crisply moulded surround and bezel, the signed
and engraved silver dial with blued-steel hands.
Circa 1780.
Diameter : 18 3/4 in. (47.5 cm.)





**Allam & Caithness,
London**

Left : A fine early 19th century mahogany trunk dial wall clock with silvered dial and hour strike by this well-known partnership.

Circa 1805 – 1810.

Height : 26 in. (66 cm.)

Diameter : 16 in. (40.5 cm.)

**Isaac Rogers,
London**

Right : A well carved George III giltwood cartel verge timepiece with 8-inch silvered and engraved dial and blued-steel hands.

Circa 1780.

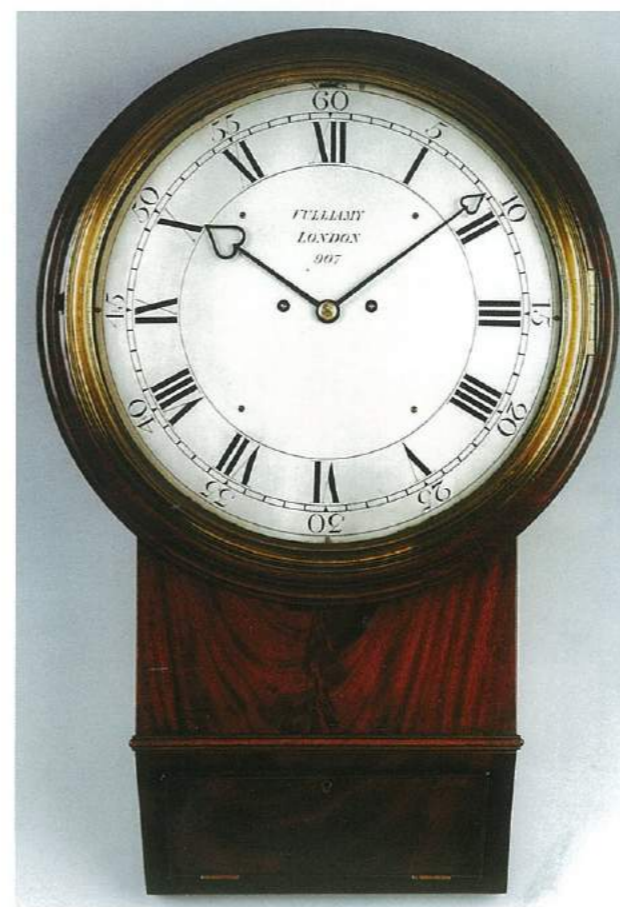
Height : 27 in. (68.5 cm.)



John Sims, London

Left : A very rare George III three train musical wall clock. The exceptional ebonised case is profusely embellished with brass mounts and surmounted by a seated gilt figure. The 12-inch dial has a recessed selector enabling the choice of one of four tunes which is played each hour on nine bells. A timepiece in a very similar case can be seen in the Mansion House in the City of London.

Circa 1775. Height : 34 in. (87 cm.)



Vulliamy, London No. 907

Left : A fine late Georgian striking mahogany wall clock by this celebrated Royal clockmaker. The figured mahogany case has a substantial moulded brass bezel, signed silvered dial and characteristic high quality double fusee movement.

Circa 1826.

Height : 28 1/4 in. (72 cm.)

Provenance: The Vulliamy Workbooks in the British Horological Institute note that this clock was delivered to a Colonel Eyre on 30th August 1826. Colonel Eyre was a keen collector of plants and in 1849 he discovered the Hong Kong Camellia in a ravine at Victoria Peak, Hong Kong.

Handley & Moore, Clerkenwell

Right : A fine quality wall timepiece with signed wood dial retaining its original painted craquelure surface, the well figured mahogany case with shaped side pieces.

Circa 1800.

Height : 21 1/2 in. (54.5 cm.)

Dial width : 12 in. (30.5 cm.)



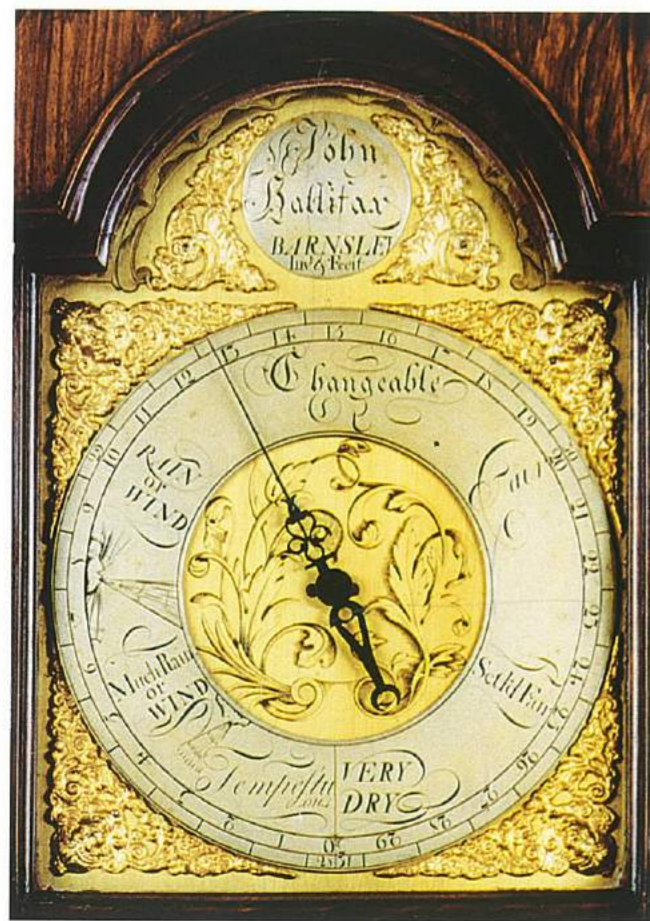
John Hallifax, Barnsley Inv't & Fecit

A fine and rare George II period inlaid walnut siphon tube dial barometer in the form of a longcase clock.

Circa 1735.

Height : 46 1/2 in. (118 cm.)

To quote from Edwin Banfield's "Barometer Makers and Retailers: 1660 –1900" John Hallifax's barometers are 'all of distinctive form, and the design of the cases and dials was influenced by the shape and line of his longcase clocks. He was regarded as one of the leading provincial clockmakers of his day and this was acknowledged on the engraving on his tombstone: 'Whose abilities and virtue few in these times have attained. His art and industry were such as his ingenious inventions will be a lasting monument of his merit – such as recommended him to the favour and esteem of all good men that knew him.'



THE VIENNA REGULATOR

These elegant clocks, which come in a range of distinctive case styles, often with movements of great complexity and finesse, were produced during a period of little more than 40 years at the beginning of the 19th century in Vienna and other cities of the Austro-Hungarian empire. We believe that the clarity of their dials and their well proportioned pedimented cases give these clocks a timeless classic simplicity. There are, interestingly, a number of stylistic similarities in their case design to the English architectural clocks of the 1670s and the classical mahogany longcases of Vulliamy et al in the late 18th century.

**Viennese
Timepiece Regulator**

Left : A rare free-standing ebonised Viennese regulator Longcase, having weight driven 2-month duration timepiece movement on one wind. The silvered circular dial with fine engine turned gilt bezel is housed in a rooftop hood decorated with entwined dolphins and surmounted by a gilded eagle.

Circa 1830.

Height : 88 in. (223.5 cm.)

Johann Hadek in Wien

Right : A rare miniature Viennese Latemdluhr timepiece regulator, the figured mahogany and maple strung case with architectural pediment, 8-Day movement with signed enamel dial, engine turned bezel and steel rod pendulum.

Circa 1830.

Height : 24 1/4 in. (61.5cm.)





Suchy in Prag

Left : An elegant figured mahogany Laternduhr timepiece regulator with signed silvered and engraved two-piece dial, of 8-Day duration with steel rod pendulum.

Circa 1850.

Height : 39 in. (99 cm.)

J.G.W. Meyer in Wien

Right : A finely figured mahogany grande-sonnerie Viennese architectural wall clock, the 8-Day movement striking the hours and quarters, the enamel dial with Roman numerals.

Circa 1820.

Height : 43 in. (109 cm.)



Further Reading

The Early Clockmakers of Great Britain by Brian Loomes published by Nag Press.

English Lantern Clocks by George White published by The Antique Collectors Club.

English Dial Clocks by Ronald E Rose (for both Taverns and English Dials) published by The Antique Collectors Club.

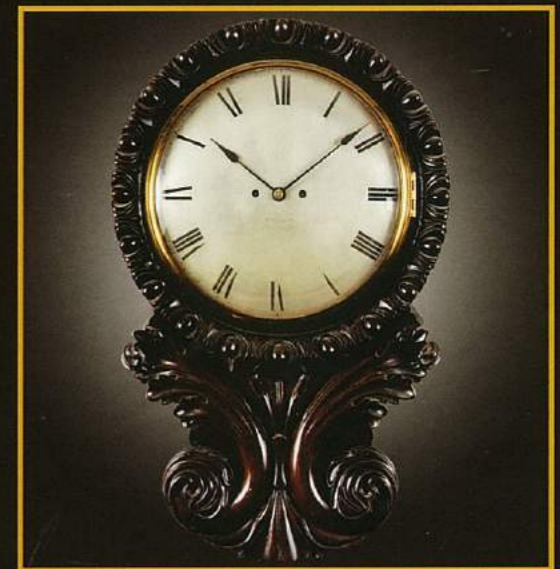
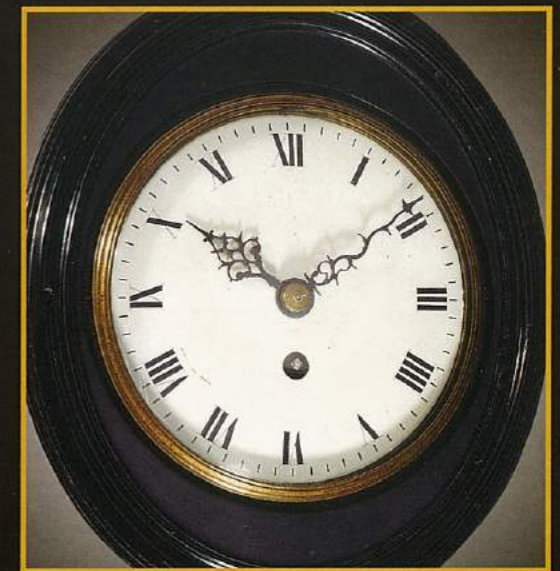
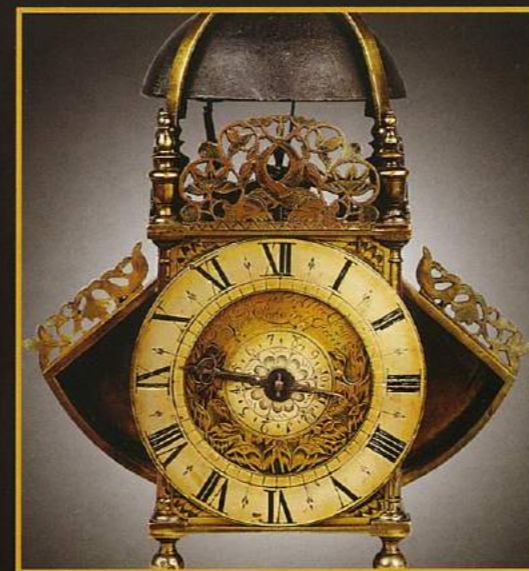
Viennese Timepieces by Frederick Kaltenbock.

An Exhibition of Act of Parliament Clocks. Strike One 1977.

English Dial Clocks. An Exhibition. Strike One 1978.

Barometer Makers and Retailers 1660 – 1900 by Edwin Banfield published by Baros Books.

Back cover: John Cowell, London. Circa 1760. Height : 47 in. (120 cm.)





RAFFETY

FINE ANTIQUE CLOCKS

P.O. BOX 120, CREDITON, DEVON EX17 9BG

TELEPHONE: 020 7937 2220

info@raffetyclocks.com

www.raffetyclocks.com

Member of the British Antique Dealers' Association