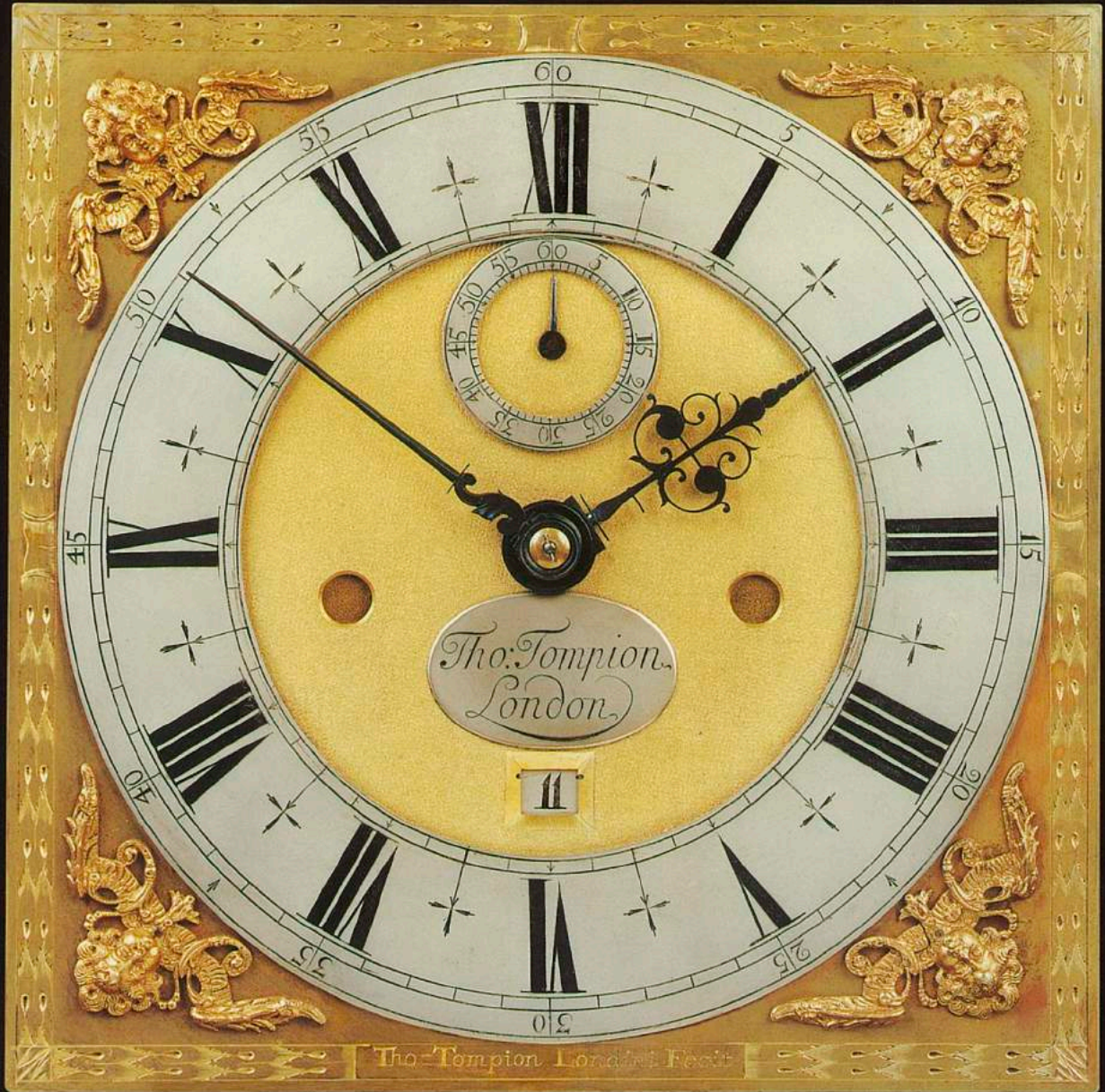


RAFFETY

FINE ANTIQUE CLOCKS



P.O. BOX 120, CREDITON, DEVON EX17 9BG

SOLD TO THE NATION

A fine astronomical calendrical table clock by Thomas Barry of Ormskirk which was acquired from us by the National Museums and Galleries on Merseyside and is currently on display in the Walker Art Gallery, Liverpool, Great Britain.



RAFFETY

FINE ANTIQUE CLOCKS

The publication of this catalogue coincides with our celebration of over twenty years of dealing in fine antique clocks in Kensington Church Street, London. We exhibit at the Grosvenor House and BADA Antiques Fairs in England and also now at the International Fine Art and Antique Dealers Show in New York.

The period English clocks and barometers shown here are a representative selection of our current stock and they feature a number of examples by some of the greatest English clockmakers. Each piece has been chosen for its originality, exceptional quality and aesthetic appeal and any restorations are sympathetically carried out by our experienced specialist clock and cabinetmakers. We offer a full guarantee as to their authenticity and good working order.

Whilst investment should never be the primary motivation in purchasing an antique clock, it is nonetheless an important factor for many collectors. Over recent years the prices of good English clocks have risen steadily and it is our firm belief that they still represent excellent value for money.

If you would like any further information on any of the pieces illustrated here, do telephone, e-mail or visit us at our Gallery.

Nigel Raffety

Front Cover : Detail of the dial of the month duration walnut longcase clock by Thomas Tompion, London, featured on page 2.



**THOMAS TOMPION
LONDINI FECIT**

A fine and rare William and Mary walnut veneered longcase clock, the 10 inch dial with hour striking movement of month duration.

Circa 1690. Height : 79 1/2 in. (202 cm.).

THOMAS TOMPION (1639-1713) is regarded as the greatest of all English clockmakers. He made a number of highly important clocks and barometers for Charles II and William III and his workmanship was always of the highest calibre. His workshops were famously situated at the sign of the Dial and Three Crowns on the corner of Water Lane and Fleet Street. Upon his death in 1713, he was succeeded by George Graham and he is buried in Westminster Abbey.

*Bibliography : Thomas Tompion his Life and Work
by R.W. Symonds*



**THOMAS TOMPION, LONDON
(1639 - 1713)**

A rare timepiece bracket clock, with pull quarter-repeating movement, the ebony case of classic proportions with finely cast ormolu mounts.

Circa 1680. Height : 12 in. (30 cm).

Above :

Detail of the signed backplate engraved with fritillaries and scrolling leaf decoration, showing Tompion's 'Z' bar repeating mechanism.

This permits the quarter hours to be sounded on a bell by pulling the cord at either side of the case.



WILLIAM III PERIOD OLIVEWOOD
CISTERN BAROMETER

Left : A very rare olivewood and ebonised cistern barometer of great beauty and museum quality.

Circa 1695. Height : 51 inches (129 cm.)

JACOB LOVELACE, EXON

Below : A rare miniature George I period brass lantern clock, the timepiece movement with alarm work and original verge escapement.

Circa 1720. Height : 8½ in. (22 cm.).

* JACOB LOVELACE was the pre-eminent clockmaker working in Exeter in the early 18th century.



DANIEL QUARE,
LONDON

A fine month-going Queen Anne period burr walnut longcase clock of rare small proportions by this famous Royal clockmaker.

Circa 1710. Height : 89 in. (226 cm.).

DANIEL QUARE (1647-1724) was a prolific maker whose best clocks and barometers equal those of his arch rival Tompion. As a Quaker he could not sign any oaths of allegiance to the King and this prevented his appointment as Royal Clockmaker. However, he was a regular visitor at the Royal Palace and was 'free of the back stairs'.





**CORNELIUS HERBERT
ON LONDON BRIDGE**

Left : A fine William III period 8 day longcase clock in an excellent state of preservation. The case is veneered in walnut and has superb flower and bird marquetry decoration set against an ebony ground. The 11 inch square dial has a matted centre, finely wrought original steel hands and cherub and foliate gilt corner spandrels. Circa 1700. Height : 81½ in. (207 cm.)

* CORNELIUS HERBERT Senior had his workshops on London Bridge from the 1670's until the early 1700's

SIMON DE CHARMES, LONDON

Below : A fine hour striking and quarter repeating bracket clock, the ebony veneered case with repoussé gilt metal basket top. Circa 1695. Height : 16 in. (42 cm.)



**WILLIAM AND MARY
MARQUETRY LONGCASE**

Right : A very untouched small month duration 10 inch dial walnut longcase clock, the beautifully veneered case with restrained panels of flower and bird marquetry.

Circa 1685. Height : 79 in. (201 cm.).

CHARLES HAYTER, CHATHAM

Below : A superb 18th century white dial Tavern clock. The rare 'teardrop' shaped case has gilt chinoiserie decoration and exotic coloured birds set within an oriental landscape against a black ground.

Circa 1770.

Height : 60 in. (152 cm.)

Dial width : 27½ in. (69 cm.)



J. BENNETT, LONDON

Left : A rare George II period mahogany stick barometer, the case with deeply moulded arched top with 3 flambeaux finials, the silvered and engraved register-plate signed in the arch and with brass moulded door.

Circa 1750. Height : 38 in. (96.5 cm.)

LEROUX, CHARING CROSS, LONDON

Below : An exceptional ormolu and red marble Georgian mantel timepiece. The case which is in the manner of Mathew Boulton depicts an allegorical female figure of love, fidelity and peace.

Circa 1800. Height : 16 in. (40.7 cm.)

* JOHN LEROUX was a maker of fine repute working in Charing Cross between 1781 and 1808.



JOHN WESTOBY, LONDON

Right : A very elegant William III longcase clock veneered with walnut and profusely inlaid with scroll marquetry. The 8 Day movement has hour strike on a single bell, subsidiary seconds and inset datework. Circa 1700. Height : 96 in. (244 cm.)

* JOHN WESTOBY was an excellent maker who was apprenticed to Thomas Wheeler, and then worked on his own account until his death in 1703.

CLAUDIUS DU CHESNE LONDINI

Below : An important George I period ebony table clock, the 8 day hour striking movement with pull quarter repeatwork on 5 bells, lunar calendar, strike/silent and moonphase in the arch, dummy pendulum aperture and inset date work.

Circa 1720. Height including finial : 27 in. (68.5 cm.)





JOHN BARNETT LONDINI FECIT

*Left : A rare small burr elm longcase clock of exceptional colour and figuring, the 8 Day movement with hour strike. Circa 1690.
Height : 79 in. (201 cm.)*

VULLIAMY, LONDON No. 794

*Below : A classic mahogany trunk dial wall clock by this highly collected royal maker. The 12 inch flat silvered brass dial has a substantial timepiece movement with original anchor escapement.
Date 1822-23.
Height : 24 1/2 in. (62 cm.)*



SPENCER & PERKINS, LONDON

A superb quality George III mahogany and ormolu mounted quarter chiming bracket clock by this celebrated partnership.

The enamel dials are set within a finely painted floral surround and the substantial three train movement has a beautifully engraved and signed backplate.

Circa 1790.

*Height :
26 1/2 in. (67 cm.)*



**EARDLEY NORTON,
LONDON No. 984**

An exceptional small mahogany musical
bracket clock by this celebrated maker.



The three train verge
movement strikes the hours
on a bell and plays a choice
of four tunes on 8 bells.
The shallow arch dial has
subsidiary dials for chime/not
chime and tune selection.

Circa 1770.

Height excluding finial :
16 in. (43 cm.).

CHARLES PACKER, READING

Right : A magnificent late 18th century longcase clock with
moonphase and year calendar showing the signs of the zodiac,
the exceptional pagoda top mahogany case with fan inlays and
great patination.

Circa 1790. Height : 97 in. (246 cm.)

**JAMES MURRAY,
ROYAL EXCHANGE, LONDON No. 1162**

Below : A rare small English library timepiece by this excellent
London maker, the four glass rosewood case with an unusual
castellated top. The single fusee timepiece movement is signed
and numbered on the backplate and it retains its original
heartshaped hands on the silvered engraved dial.

Circa 1840. Height : 9 1/2 in (24 cm.)





THOMAS LAIDLAW, LONDON

Left : An exceptional George III period Mahogany Longcase Regulator of rare small size.
Circa 1780-1790. Height : 73 1/2 in. (187 cm.)

JOHN SIMS, LONDON

Below : A very rare George III three train musical wall clock. The exceptional ebonised case is profusely embellished with brass mounts and surmounted by a seated gilt figure. The 12 inch dial has a recessed selector enabling the choice of one of four tunes which is played each hour on nine bells.
Circa 1775. Height : 34 in. (87cm.).



JAMES SMITH, LONDON

A superb George III period red lacquer musical bracket clock, the moulded case decorated with finely executed floral and cross hatched gilding on a patinated red ground, the brass dial with subsidiary rings for chime/not chime and Tune Selection.



The substantial three train fusee movement has a verge escapement, engraved backplate and plays one of a choice of four tunes on the hour, namely :
A Bonny Lad, Happy Clown, Lovely Nancy and a March.
Circa 1775.
Height : 21 1/2 in. (54.5 cm.)

**GEORGE I
WALNUT STICK BAROMETER**

Left : An exceptional George I period walnut stick barometer with a Royal Society scale. Circa 1725.

JOHN EVERETT, LONDON

Below : A good shield dial Tavern clock, the case with gilt chinoiserie decoration set against a black ground. Circa 1765. Height : 66 in. (168 cm.) Dial width : 31 1/2 in. (80 cm.).

* For an almost identical clock see page 66 plate 28 in "English Dial Clocks" by R. E. Rose.



WINDMILLS, LONDON

Right : A fine Queen Anne period longcase clock by this celebrated maker, the case with exceptional burr walnut veneers and the high quality square dial movement hour striking on a bell.

Circa 1715. Height : 87 1/2 in. (222 cm.)

WILLIAM CARTER, BARNABY STREET, LONDON

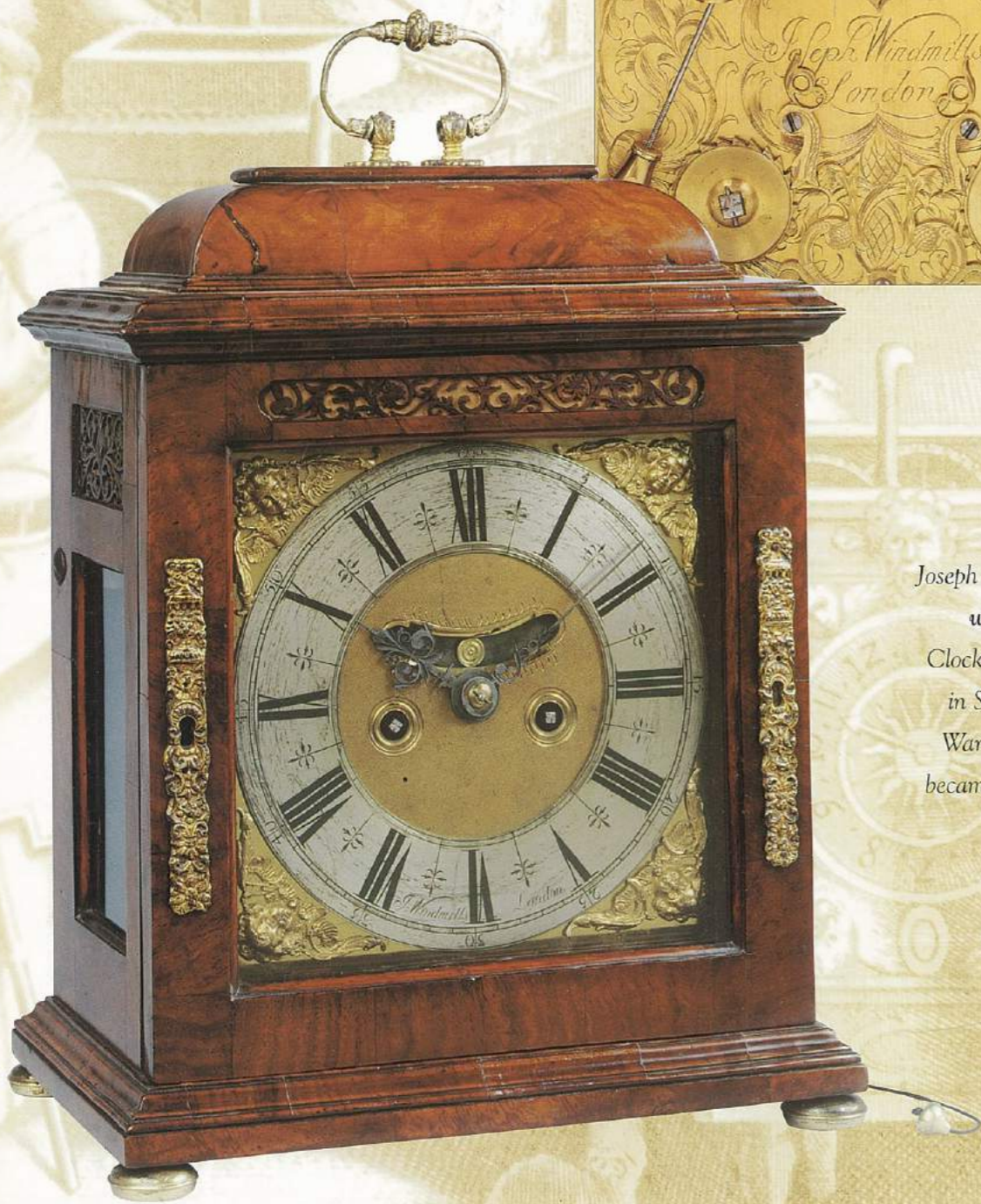
Below : A charming and unusual white dial Tavern clock. The case has gilt chinoiserie decoration and a coloured print on the door, depicting four elaborately clad figures in a wooded landscape.

Circa 1775-1780. Height : 55 1/2 in. (141 cm.)



JOSEPH WINDMILLS, LONDON

A rare walnut bracket clock, by this famous maker, the classic dome topped case with highly figured walnut veneers, repoussé brass mounts and bun feet. The hour striking verge movement has pull quarter repeatwork on four bells and an elaborately engraved backplate (see detail). Circa 1700. Height : 14 in. (35.5 cm.) without handle.



Joseph Windmills, London was Free of the Clockmakers' Company in September 1671, Warden in 1699 and became Master in 1702.

PAUL RIMBAULT, LONDON

An important mahogany longcase clock by this well known maker. The 8 day brass dial hour striking movement has a revolving sphere in the arch which indicates the phases of the moon. The tapering architectural mahogany case shares a number of similarities with one of Thomas Chippendale's clock case designs.

Circa 1770.

Maximum height including finials : 98 in. (249cm.)



DWERRIHOUSE,
BERKELEY SQUARE, LONDON

Left : A fine architectural London mahogany longcase clock, the beautifully proportioned mahogany case of excellent colour and figure, the movement with square silvered brass dial, engraved with the maker's signature. It has hour strike and a strike/silent lever at 3 o'clock. Circa 1790. Height : 85 in. (216 cm.)

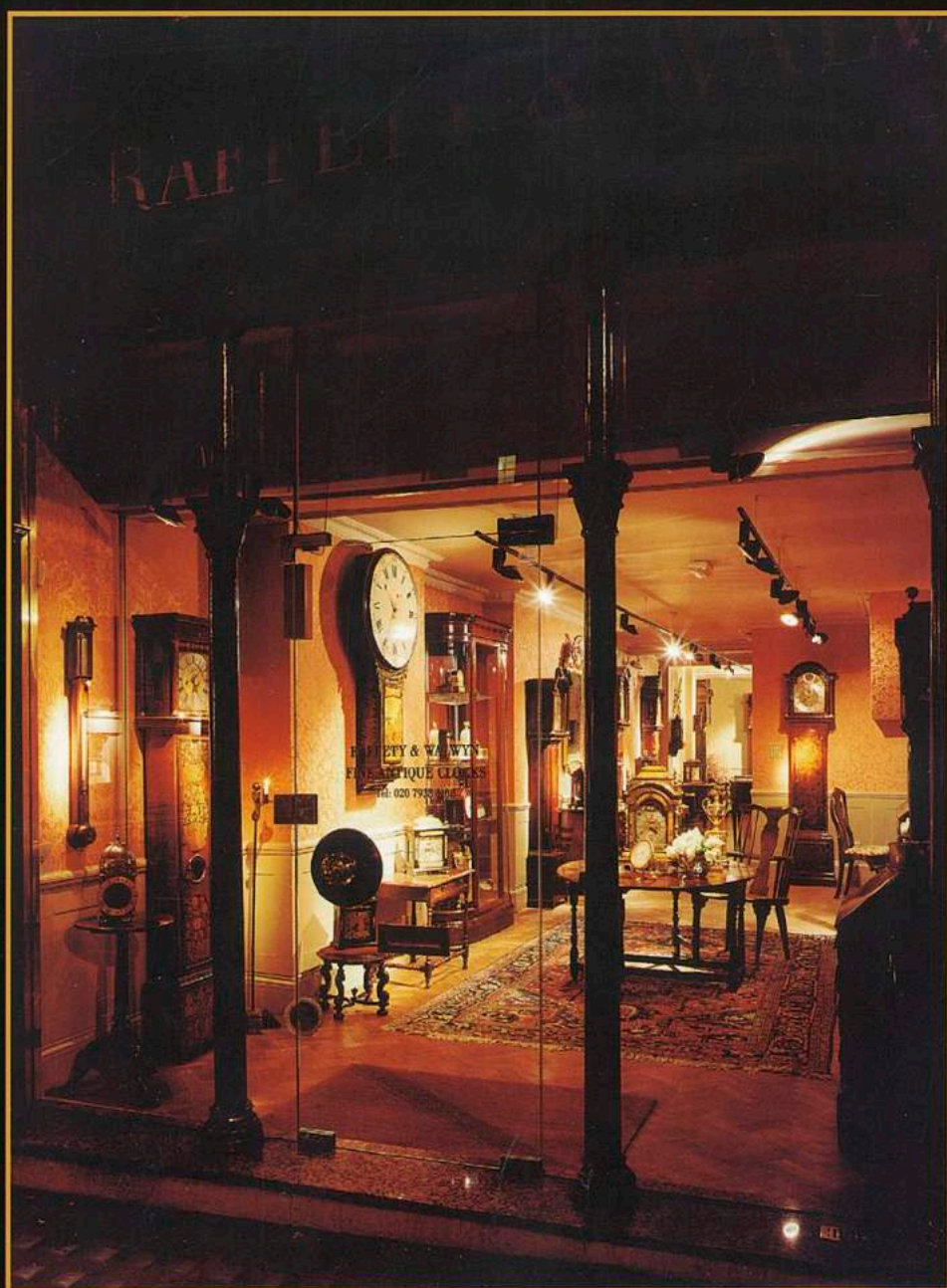
* JOHN DWERRIHOUSE was one of the finest clockmakers working in London during the late Georgian period

MARTIN,
ROYAL EXCHANGE, LONDON

Below : A rare small quarter-chiming enamel dial bracket clock by this excellent maker, the well-proportioned brass moulded and ebonised case with three pad top and carrying handle, the movement with verge escapement striking the hours and also quarter chiming on a further six bells. Circa 1785.

Height excluding handle : 11 1/2 in. (29 cm.)





RAFFETY

FINE ANTIQUE CLOCKS

P.O. BOX 120
CREDITON, DEVON EX17 9BG

TELEPHONE: 020 7937 2220

info@raffetyclocks.com

www.raffetyclocks.com